

TAKAOKA CO., LTD. TECHNOCUT (Auto-cutter CAM) TC50/70-4WB(-T) V2.0 NEW FUNCTIONS (Jan.2018 release)

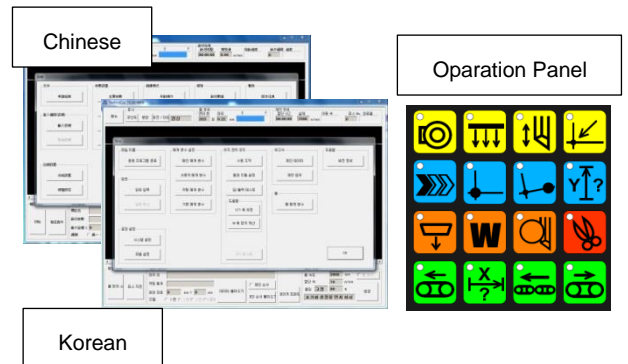
■ Multi-lingual

Other than Japanese and English, Chinese and Korean display is now also available.

By editing the language table, we can put in up to 6 different languages.

The multi-lingual display can help shorten the time needed for customers to learn the machine operation.

It can also help reduce the chance of operation mistake.

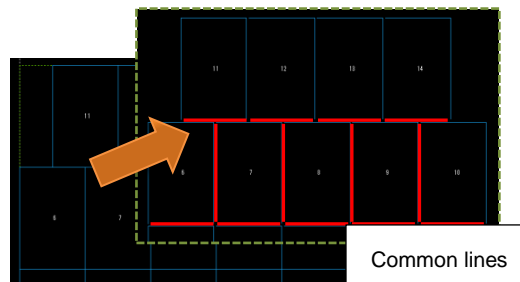
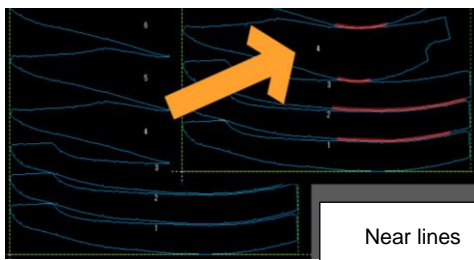


■ Common Line Deletion (Prevents double cutting) · Near Lines cutting

Detection of near lines and overlapping common lines between nearby pieces.

Prevents double cutting, and allows automatic deceleration to avoid damage to adjacent pieces.

Helps shorten the cutting time, and increases the cutting quality and material usage.

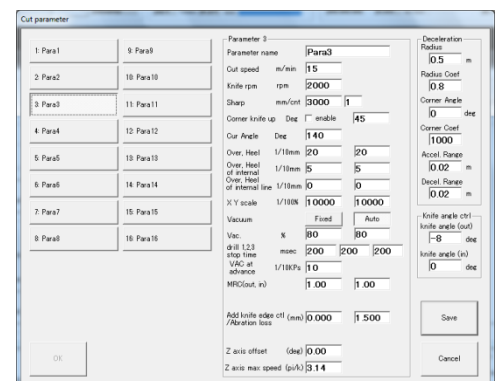


■ Various Parameters

Specific parameters can be set to meet the demand for cutting various kinds of materials.

Optimum cutting setting in accordance to the material

i.e.: Hard car-seat, Knit, industrial use fabrics



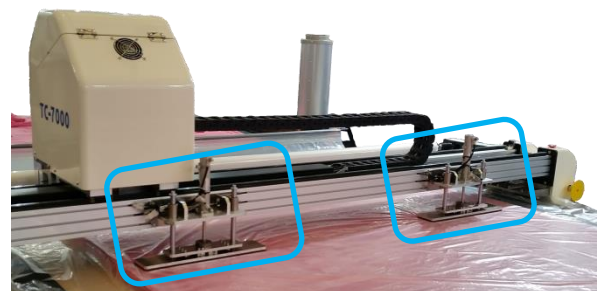
■ Improved acceleration/deceleration · cutting speed

Cutting parameters such as acceleration / deceleration and cutting speed of cutting head can be set with different values for corner, boring etc. Improves cutting accuracy, and reduces cutting time.

■ Fabric Press (Option)

Mechanism to help hold down the fabrics while moving from the spreading table onto the cutter.

Prevents fabric slipping, and reduce the manpower needed to hold down the fabric.



TAKAOKA Co.,Ltd.

4-6-1 ,Kita-Tatsumi,Ikuno-ku,Osaka 〒544-0004 Japan

TEL : +81-6-6751-2500 FAX : +81-6-6751-2510

Web : <http://en.takaoka-technocut.co.jp/>

